

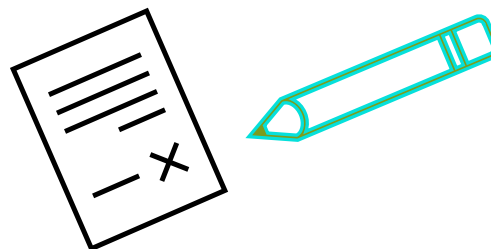
# Special arrangements of examination

This support is available to students who need Japanese language instruction, regardless of nationality.



# Special Arrangement for the Students Who Need Language Assistance ① <Provide of Furigana (Ruby) >

<b>Target</b>	<b>The students who has been in Japan for less than 6 years and need Japanese language assistance. ( regardless of nationality)</b>
<b>Special Arrangement</b>	<b>Provide of Furigana(Ruby) to Kanji on examination test sheet of <b>5 subjects</b> (Japanese ▪ Math ▪ English ▪ Social Studies ▪ Science).</b>  ※In the Japanese language test, there are some parts that do not have Ruby.
<b>Document and Procedure</b>	<b>Submit</b> “Application Form for Special Exam for the Students Who Need Language Assistance (Ruby)”. ★ Proof of arrival period: Prepare passport, etc.



## Special Arrangement for the Students Who Need Language Assistance ②

### <Provide of Furigana, Can bring in dictionary >

<b>Target</b>	<p>The students who has been in Japan for less than 3 years and need Japanese language assistance. ( regardless of nationality)</p>
<b>Special Arrangement</b>	<ul style="list-style-type: none"> <li>▪ Provide of Furigana(Ruby) to Kanji on examination test sheet of <b>5 subjects</b> (Japanese ▪ Math ▪ English ▪ Social Studies ▪ Science)</li> <li>▪ Can bring in dictionary (up to two) ✖ <b>Excludes Japanese language test</b></li> <li>▪ Extend test time by 10 minutes for 4 subjects. ✖ <b>Excludes Japanese language test</b></li> </ul>
<b>Document and Procedure</b>	<p><b>Submit</b> “Application Form for Special Exam for the Students Who Need Language Assistance (Ruby, Dictionary)”.</p> <p>★ Proof of arrival period: Prepare passport, etc.</p>