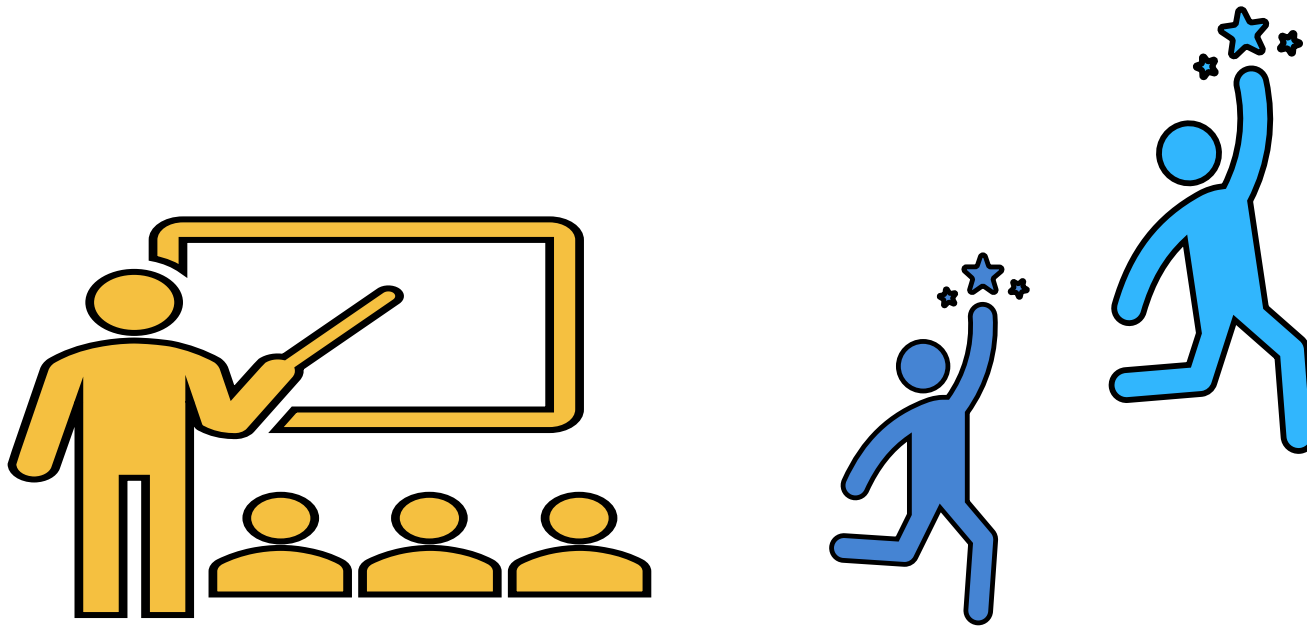




# Tokyo Metropolitan High School



# Full-Time Program and Part-Time Program

The Difference Between Full-Time Program and Part-Time Program.

2 types of “Which time do you go to school in?”

Program	Days to go to school- class time
 <b>Full-Time</b>	<ul style="list-style-type: none"><li>• Class starts from 8:30 am to 3:30 pm.</li><li>• School day is from Mon to Fri but some school has class on Sat.</li><li>• 3 years for graduation.</li></ul>
 <b>Part-Time</b>	<ul style="list-style-type: none"><li>• Take class either in morning, afternoon and evening (class time is 4 hours)</li><li>• Day and Night Part-Time High Schools which has the 3 time zone and Night Part-Time High Schools using the same school building as Full-Time High School.</li><li>• 4 years for graduation. 3 years for graduation is possible by taking the credit outside of school or taking classes in other time zones.</li></ul>

# There are grade system and credit system schools

<b>grade system</b>	<ul style="list-style-type: none"><li>◇ What you study differs by the Grade ( 1 — 3 · 4 Grader ) .</li><li>◇ If you cannot get the credit of the year, you will be <i>ryunen</i> (repeating the same grade)</li></ul>
<b>credit system</b>	<ul style="list-style-type: none"><li>◇ No difference in grade level, just choose and take the required number of credits for the school year</li><li>◇ No difference in grade level so no <i>ryunen</i> but you have to take the credit needed for graduation.</li></ul>

**1 class hour in a week ⇒ 1 credit**

# There are 4 types according to what you study.

<b>types</b>	<b>what you study</b>
General Course	<ul style="list-style-type: none"><li>▪ Study normal subjects ( Japanese, Social Studies, Math, Science, English etc.)</li></ul>
General Course - Course System	<ul style="list-style-type: none"><li>▪ General Course but also focused on the specific field. (Foreign Cultural Course or Fine Arts Course etc.)</li></ul>
Specialized Subject	<ul style="list-style-type: none"><li>▪ Study the basics of technology, specialized knowledge and skills directly related to your profession. (Various fields such as Commerce, Industry, Agriculture, Information, Art etc.)</li></ul>
General Subject	<ul style="list-style-type: none"><li>▪ Subjects of Both General Course and Specialized Subject are available</li></ul>