

Preparation for Entrance Examination



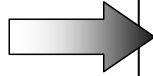
- 1. Future learning schedule**
- 2. Let's decide the school
where you want to study!**

~For 3rd grader in Japanese junior high school~

1. Schedules for future exam.

July

First survey about future perspectives

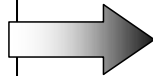


- Do you like to attend high school or find employment?
- Do you like to go to a Tokyo Metropolitan high school?
- Do you like to go to a private school?
- Do you wish to attend a particular high school?

Academic performance of 1st Semester

- Academic records of the 1st semester are crucial!

Parent-Teacher-Student Meeting



- Which is your first choice of high school?
- Study plans for summer vacation.
- Visiting a high school during summer holidays.

Things to do during summer vacation

Let's attend supplementary lessons at school or visit a high school.

Let's study hard during the summer vacation!

Summer vacation is the most important time for your studies!

Study Japanese/Math/English

Attend tutorial support class, if you can.

September 2nd Semester

Gather information on High Schools!
Attend school cultural festivals!
Introductory sessions/trial classes in September–December as usual.

Check the school homepage

·Take a trial examination at school and / at other venues, in the second semester.

October

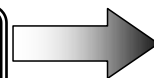
Mid-term Examinations

Guidance session for future courses at Junior High Schools.

November

Second survey about future perspectives

Parent–Teacher–Student Meeting



Which High Schools will you apply for?

· Would you like a recommendation to attend a private, or a Tokyo Metropolitan high school?

Final Examinations

December

Internal academic evaluation will be completed

Evaluation will be based on performance records from 1st and 2nd semesters!

Third survey about future perspectives

Parent-Teacher-Student Meeting

Academic performance of 2nd Semester

* *Career consultation about private high school*

From December 15th: Consultation on high school enrollment (with Junior high school teachers and private high school teachers in Tokyo) as usual year.

Recommended students & those who will take exams.

©But this year, the schedule is not yet certain.

Fill in high school names in application forms

Final Decision!

- Make sure to try admission exams from previous years of your targeted schools.
Japanese/Math/English (Social studies/Science)
- Attend nearby tutorial support class if you can.

Winter Vacation

3rd semester

January Entrance examination

Internal recommendation to enter private high school
Internal recommendation to enter Tokyo Metropolitan high school
Special quota for foreign national students

* It is difficult to secure an internal recommendation for a Tokyo Metropolitan high school.

February Entrance Examination

Admission exams for private high school
Admission exams for Tokyo Metropolitan high school

- Special quota for overseas returnee
- Special quota for Returnees and Repatriates
- The first-term exam.

Various Application Methods

1. Internet
2. Mail
3. Bring your own application

March Entrance Examination

Admission exams for Tokyo Metropolitan high schools (the second-term exam, The divisive late exam)

Admission exams for Tokyo Metropolitan part-time high schools (the second-term exam)

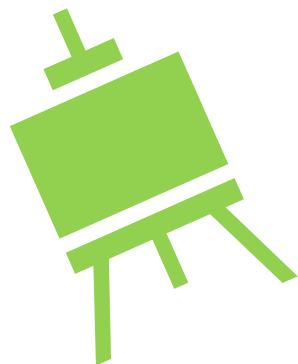
Check the information on entrance examinations carefully!

2. Let's decide the school you want to study!

Carefully research the features and choose the school that suits you !

School atmosphere or features, Level, Distance from home, Japanese language support, etc.

Next; Schools with relatively many foreign students



1. Schools with Special Quota For Foreign National Students

Foreign and Japanese students are eligible. Eligibility screening in December.

High School Name	Exam day	
Asuka	1/26	<ul style="list-style-type: none"> ❖ Content of entrance examination <ul style="list-style-type: none"> ▪ Essay composition (Japanese or English) and Interview (Japanese or English) ❖ There is a qualification confirmation in December
Tagara		
Takenodai		
Minami-katsushika		
Fuchu-Nishi		
Rokugo-Koka		
Suginami-Sogo		
Hitotsubashi		
Asakusa		
Ogikubo		
Sunagawa		
Kokusai	2/14	

Full-Time

Day and Night Part-Time

2. Day and Night Part-Time High Schools

Credit system

★ Schools with Special Quota For Foreign National Students(1st and 2nd sections only)

You can choose three parts in the morning, afternoon and evening and enter the school.

High School Name	Exam day	
Hitotsubashi★	The first-term exam 2/21	❖ Content of entrance examination Japanese・Math・ English and Interview(Japanese) ❖ Graduation in 3~4 years
Asakusa★	The second-term exam 3/11	
Shinjuku-yamabuki		
Ogikubo★		
Sunagawa★		
Hachioji-takushin		

3. Challenge School

Part-time High School based on credits.

Offer morning, afternoon and evening classes.

High School Name	Exam day	
Kirigaoka	2/21	<ul style="list-style-type: none">❖ Content of entrance examination<ul style="list-style-type: none">▪ Application Form▪ Interview ▪ Essay compositions❌ No need to submit junior high school grades.❖ Small classes
Setagaya-izumi		
Ooedo		
Roppongi		
Minorigaoka		
Hachioji-takushin		
Odaihashi		

4. Encourage School

- Full time system
- Learning from basics
- Experience-based small class adapted to ability of each student



High School Name	Exam day	
Adachi-higashi	2/21	❖ Content of entrance examination
Kamata	↓	▪ Junior high school record
Akirudai		▪ Interview
Higashi-Murayama		▪ Essay composition
Nerima Technical High School		
Nakano Technical High School		

5. Night Part-Time High School

Studying from 5 p.m. to 9 p.m. in the evening.

Graduation in 4 years (3years graduation possible at some school)

High School Name	Exam day	
There are about 40 night part-time high schools in Tokyo	The first- term exam	❖ Content of entrance examination
	2/21	Japanese・Math・English and Interview
	The second- term exam	❖ Graduated 3~4 years
	3/27	❖ Small class ❖ Japanese support system

Map of Metropolitan High School

Schools with Special Quota for Foreign Students (12 schools)

◎ ⇒ Night and Daytime Part-time high school (6 schools)

